

ADVANTEC® Introduces Sterile MCE Membranes for Dispensers

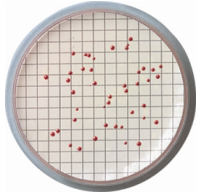


- ✓ Available in 0.45µm and 0.80µm pore sizes
- ✓ White or Black membranes with gridded surface
- ✓ Pre-sterilized and ready to use
- ✓ 100 individually sealed filters in a continuous pleated band
- ✓ Compatible with various dispensers (Microsart e.motion, EZ-Pak, Membrane-Butler)
- ✓ Membrane specifications and lot number are printed on clear cover of each filter.

ADVANTEC's pleated band membranes offer the same high quality and reliability as the individually wrapped MCE membranes that you are used to. The pleated band MCE for the dispenser provides hands-free convenience and increased efficiency as well as reducing the risk of membrane contamination from handling.

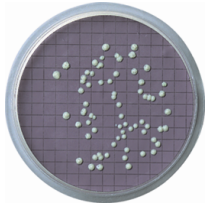
Applications

Mixed Cellulose Esters (MCE) membrane is a general purpose filter used in many applications for the microbiological examination of water, wastewater, pharmaceuticals, food, and beverages. The membrane not only has high recovery rates, its high porosity provides superior flow rates as well.



White MCE

White MCE membranes are widely used for the purpose of enumeration of microorganisms and to view color reactions. This is the filter of choice for the examination of water and wastewater and applications in the pharmaceutical, medical, food and beverage industries.



Black MCE

The use of a black membrane helps minimize eye fatigue and can assist with counting colonies by providing a color contrast between the filter and microorganism, yeast, and mold without the need for a counter-stain. This is the filter of choice for the examination of bottled water, carbonated beverages, beer, and wine.

Quality Assurance Certification

Advantec membranes were developed and are manufactured to comply with the ASTM and the Standard Methods for the Examination of Water and Wastewater. We manufacture our filter products to exacting standards and have established quality control specifications to assure you of product consistency, reproducibility, uniform performance, and superior product integrity. Advantec facilities manufacture under a strict quality management system and are ISO 9001 approved. Quality control tests are performed on each lot and a QA Certificate is available upon request.



Sterilization

Ethylene oxide (EtO) gas

Specifications

47mm membranes are available in white or black and in 0.45 μ m or 0.80 μ m pore sizes. Contrasting grid lines facilitate counting colonies and are tested to assure freedom from grid line inhibition. 3.1mm squares represent 1/100 of the filtration area of a 47mm diameter filter (9.6cm²). White 0.80 μ m membranes have green grid lines. All other combinations have black grid lines.

Ordering Information

<u>Color</u>	<u>Pore Size (μm)</u>	<u>Diameter (mm)</u>	<u>Qty/Pk</u>	<u>Catalog #</u>
White	0.45	47	100	A045H047A-P
White	0.80	47	100	A080H047A-P
Black	0.45	47	100	A045R047A-P
Black	0.80	47	100	A080R047A-P